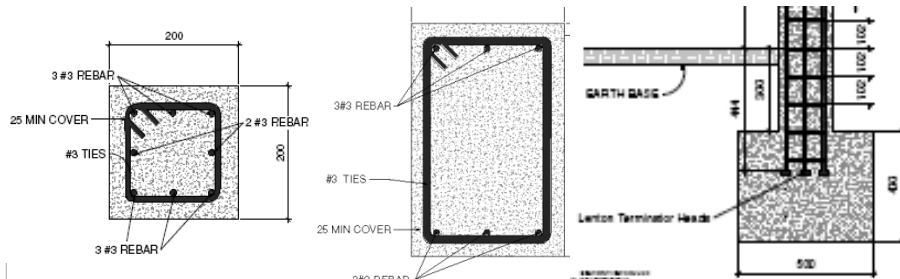
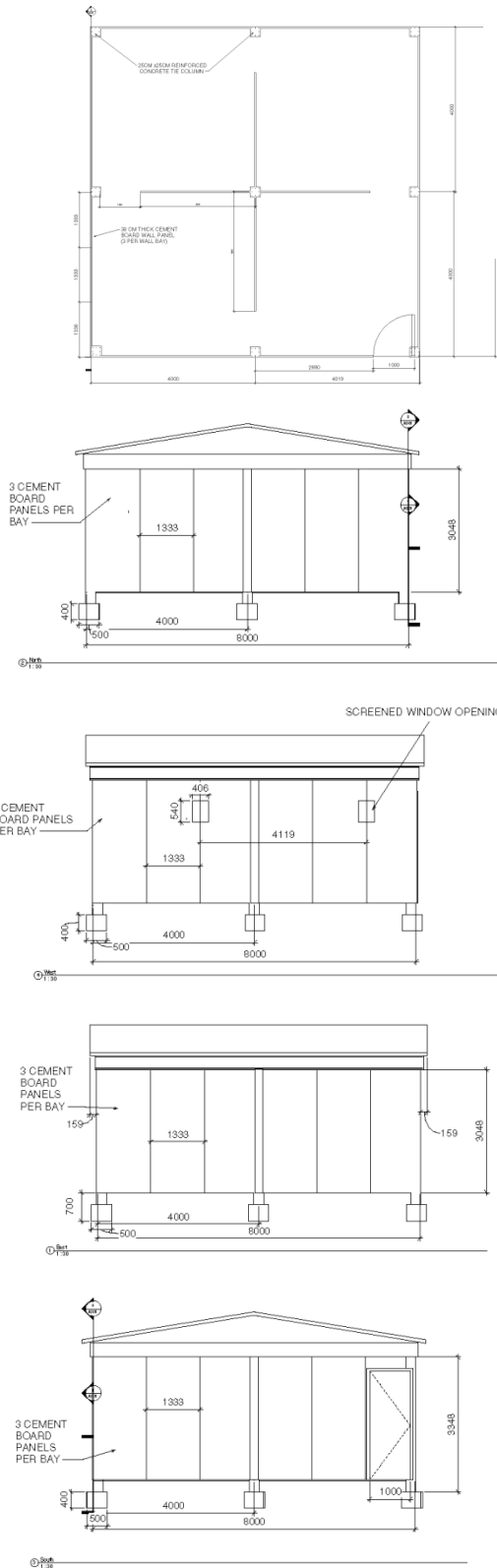




STANDARDIZED FLOOR PLAN



KEY SPECS

- ▶ 4 room, 8 m x 8 m home with porch, expandable
- ▶ 20cm x 20cm x 300 cm columns, 3@4 m OC, reinforced by 8 #3 bars, stirrups 10 cm OC
- ▶ 36cm x 20cm beams, reinforced by 6 #3 bars, stirrups at 15 cm OC
- ▶ Meets ASCE 7 load provisions, ACI 318 compliant

MODULAR COMMUNAL CONSTRUCTION



- ▶ Lightweight concrete precast panels
- ▶ Prefabricated reinforcing cages with headed bars
- ▶ Communal standardized formwork and mixers with measurement guides